



VRD43_{CO2}

Establishing a NEW STANDARD in the commercial refrigeration industry.

New generation cooler which integrates technologies that reduce the environmental impact and its carbon footprint.



KEY FEATURES



ELECTRONIC TEMPERATURE CONTROLLER

Assures the optimal performance of the cooler, delivering product temperature ideal for consumption.



ECO-FRIENDLY REFRIGERANTS CO₂

Alternative refrigeration gases that do not contain HFCs and thus reduce the environmental impact.



ELECTRONIC FAN MOTORS

Enhances performance and efficiency. Uses only a fraction of the energy than industry standard shaded-pole motor requires. Longer useful life fan motor.



HIGH EFFICIENCY GLASS DOOR

Equipped with double panel glass and low-e film to reduce condensation. Door hinge is equipped with a self-closing system to ensure the door closes safely, and returns to original position, without any damages.



LED LIGHTING SYSTEM

Our LED system uses a fraction of the energy of regular fluorescent lights and requires no replacement for up seven years.



CYCLOPENTANE INSULATION

Eco-friendly, recyclable and high efficiency cabinet insulation.



PLASTIC FRONT GRILL

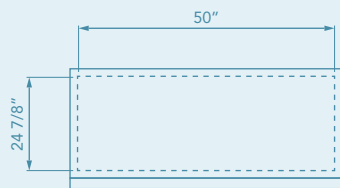
Its differentiated and modern design provides superior impact resistance and is easy to remove for condenser maintenance.



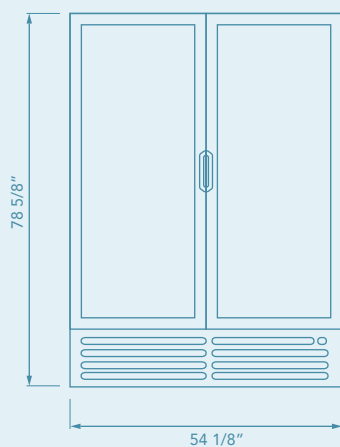
COMMERCIAL REFRIGERATOR
AND/OR FREEZER
9242

NSF/ANSI 7 COMMERCIAL REFRIGERATOR
AND/OR FREEZER
201Y

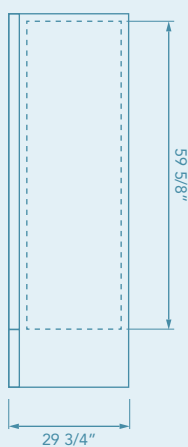
VRD43_{CO2}



TOP VIEW



FRONT VIEW



SIDE VIEW

TECHNICAL SPECIFICATIONS

External Dimensions	H:	78 5/8"	1997 mm
	W:	54 1/8"	1375 mm
	D:	29 3/4"	756 mm
Internal Dimensions	H:	59 5/8"	1515 mm
	W:	50"	1270 mm
	D:	24 7/8"	633 mm
Weight	Gross:	466.3 lb	211.5 kg
	Crated:	472.9 lb	214.5 kg
Volume		41.6 ft ³	1179.7 lts
Capacity	53':		30
Doors		2	
Shelves		10	
20 oz bottle capacity	Total:		560
	Front:		8
	Gravity feed:		560
12 oz can capacity	Total:		1134
	Gravity feed:		560

REFRIGERATION DATA

Energy Consumption (kWh/24h)	5.137*
Refrigerant R744 (kg)	0.390
Compressor (w)	1120
Evaporator	Dynamic
Temp range	32°F to 44.6°F

ELECTRICAL DATA

Amps (A)	9.8
Volts (V)	115
Frequency (Hz)	60
Lighting	LEDs
Cord Length	118" 3000 mm
Plug type	NEMA 5-15P



IMBERA USA L.L.C.

245 TownPark Drive Suite 145
Kennesaw, GA 30144

www.imeracooling.com

* Energy consumption based on ANSI/ASHRAE 72-2005

BMAD System (Low maintenance high performance).
Dimensions rounded up to the nearest inch or millimeter.
Specifications subject to change without notice.